

Research article

Open Access

## Jejunal microvilli atrophy and reduced nutrient transport in rats with advanced liver cirrhosis: improvement by Insulin-like Growth Factor I

Inma Castilla-Cortázar\*<sup>1,4</sup>, María Pascual<sup>1</sup>, Elena Urdaneta<sup>1</sup>, Javier Pardo<sup>2</sup>, Juan Enrique Puche<sup>4</sup>, Bárbara Vivas<sup>4</sup>, Amelia Díaz-Casares<sup>3</sup>, María García<sup>4</sup>, Matías Díaz-Sánchez<sup>1</sup>, Isabel Varela-Nieto<sup>3</sup>, Alberto Castilla<sup>5</sup> and Salvador González-Barón<sup>4</sup>

Address: <sup>1</sup>Department of Physiology, Clínica Universitaria. University of Navarra, Pamplona, Navarra, Spain, <sup>2</sup>Department of Pathology, Clínica Universitaria. University of Navarra, Pamplona, Navarra, Spain, <sup>3</sup>Instituto de Investigaciones Biomédicas "Alberto Sols", CSIC, Madrid, Spain, <sup>4</sup>Department of Human Physiology, School of Medicine, University of Málaga, Málaga, Spain and <sup>5</sup>Department of Internal Medicine. Hospital Sierrallana, Tollelavega and School of Medicine, University of the Basque Country-Vitoria-Gasteiz, Spain

Email: Inma Castilla-Cortázar\* - [iccortazar@uma.es](mailto:iccortazar@uma.es); María Pascual - [mpascual@ochoa.fib.es](mailto:mpascual@ochoa.fib.es); Elena Urdaneta - [elena.urdaneta@unavarra.es](mailto:elena.urdaneta@unavarra.es); Javier Pardo - [jpardo@unav.es](mailto:jpardo@unav.es); Juan Enrique Puche - [puche@uma.es](mailto:puche@uma.es); Bárbara Vivas - [berlanga@uma.es](mailto:berlanga@uma.es); Amelia Díaz-Casares - [adcasares@iib.uam.es](mailto:adcasares@iib.uam.es); María García - [mdiaz@chdo.osakidetza.net](mailto:mdiaz@chdo.osakidetza.net); Matías Díaz-Sánchez - [igf@uma.es](mailto:igf@uma.es); Isabel Varela-Nieto - [ivarela@iib.uam.es](mailto:ivarela@iib.uam.es); Alberto Castilla - [med003047@saludalia.com](mailto:med003047@saludalia.com); Salvador González-Barón - [sgonzalez@uma.es](mailto:sgonzalez@uma.es)

\* Corresponding author

Published: 14 June 2004

Received: 14 January 2004

*BMC Gastroenterology* 2004, **4**:12

Accepted: 14 June 2004

This article is available from: <http://www.biomedcentral.com/1471-230X/4/12>

© 2004 Castilla-Cortázar et al; licensee BioMed Central Ltd. This is an Open Access article: verbatim copying and redistribution of this article are permitted in all media for any purpose, provided this notice is preserved along with the article's original URL.

### Abstract

**Background:** Previous results have shown that in rats with non-ascitic cirrhosis there is an altered transport of sugars and amino acids associated with elongated microvilli. These alterations returned to normal with the administration of Insulin-Like Growth Factor-I (IGF-I). The aims of this study were to explore the evolution of these alterations and analyse the effect of IGF-I in rats with advanced cirrhosis and ascites. Thus, jejunal structure and nutrient transport (D-galactose, L-leucine, L-proline, L-glutamic acid and L-cystine) were studied in rats with ascitic cirrhosis.

**Methods:** Advanced cirrhosis was induced by CCl<sub>4</sub> inhalation and Phenobarbital administration for 30 weeks. Cirrhotic animals were divided into two groups which received IGF-I or saline during two weeks. Control group was studied in parallel. Jejunal microvilli were studied by electron microscopy. Nutrient transport was assessed in brush border membrane vesicles using <sup>14</sup>C or <sup>35</sup>S-labelled substrates in the three experimental groups.

**Results:** Intestinal active Na<sup>+</sup>-dependent transport was significantly reduced in untreated cirrhotic rats. Kinetic studies showed a decreased V<sub>max</sub> and a reduced affinity for sugar and four amino acids transporters (expressed as an increased K<sub>d</sub>) in the brush border membrane vesicles from untreated cirrhotic rats as compared with controls. Both parameters were normalised in the IGF-I-treated cirrhotic group. Electron microscopy showed elongation and fusion of microvilli with degenerative membrane lesions and/or notable atrophy.

**Conclusions:** The initial microvilli elongation reported in non ascitic cirrhosis develops into atrophy in rats with advanced cirrhosis and nutrient transports (monosaccharides and amino acids) are progressively reduced. Both morphological and functional alterations improved significantly with low doses of IGF-I.

## Background

Disordered energy, protein metabolism and malnutrition are complications of liver cirrhosis, especially in advanced stages [1,2]. Although clinically significant malabsorption of nutrients is not frequent in these conditions, low-grade malabsorption seems to be involved in the development of malnutrition in these patients [1-3].

Plasma levels and/or bioavailability of Insulin-like Growth Factor-I (IGF-I), an anabolic peptide produced mainly in the liver, are diminished in cirrhotic patients [4-7]. Enterocytes express IGF-I receptor population [8-10]. Therefore, IGF-I levels might influence intestinal function. All gastrointestinal secretions have IGF-I-immunoreactivity [11]. Therefore it was suggested that a deficiency of this hormone could be involved in maldigestion/ malabsorption, leading to malnutrition in cirrhosis [12-14]. In fact, recently published results have shown that in rats with non-ascitic cirrhosis there is an alteration of sugars and amino acid transport associated with elongation of microvilli [13,15,16]. Both morphological and functional alterations returned to normal with the administration of IGF-I, at low doses [13,15,16]. Taking into account these previous data, the purpose of this study was focused on elucidating the historical progression of these alterations by studying a series of animals with advanced cirrhosis and ascites. Therefore the specific aims of this study were: 1) to investigate the structure of jejunal microvilli and intestinal function in rats with ascitic liver cirrhosis; and 2) to study whether IGF-I could influence intestinal disturbances in advanced stages of the hepatic disease. For these purposes, the transport of galactose, L-leucine (neutral amino acid), L-proline (IMINO acid), L-glutamic acid (anionic or acidic amino acid) and L-cystine (sulfurate amino acid)- were investigated in brush border membrane vesicles (BBMV) in control rats, in untreated cirrhotic rats and in cirrhotic rats treated with IGF-I. In addition, electron microscopy (EM) of jejunal mucosa was performed in the three experimental groups.

## Methods

### Experimental design

All procedures were performed in conformity with *The Guiding Principles for Research Involving Animals* [17].

Liver cirrhosis was induced in male Wistar rats, as previously described [14,18] by  $\text{CCl}_4$  inhalation and Phenobarbital in drinking water (Luminal®, Bayer, Leverkusen, Germany) (400 mg/L), for 11 weeks. Afterwards, cirrhotic rats continued receiving  $\text{CCl}_4$  once a week (2-3 min. inhalation) to complete 30 weeks of  $\text{CCl}_4$  administration.

Age-matched healthy control rats (group CO, n = 10) were studied in parallel. In the last two weeks (28 to 30) cirrhotic animals received subcutaneous saline (untreated

cirrhotic group, CI, n = 10) or IGF-I ( $2 \mu\text{g} \times 100 \text{g body weight}^{-1} \times \text{day}^{-1}$ , group CI+IGF, n = 10) for two weeks. Control rats (CO) received saline during the last two weeks of the study.

The day before starting treatment (day 0), blood was collected from the retroocular plexus of all rats with capillary tubes (70 mm, Marienfeld, Mergenheim, Germany). Serum samples were divided into aliquots, and stored at  $-20^\circ\text{C}$ . At the end of the experimental period (day 15), blood was collected again and animals were killed by decapitation. Ascites was confirmed and measured by the direct observation of the abdominal cavity. Jejunal samples (20 cm approx.) were immediately frozen by immersion in liquid  $\text{N}_2$  and stored at  $-80^\circ\text{C}$ , and the proximal segment was processed by electron microscopy study. The liver was also dissected out and samples were processed for histological examination.

### Electron microscopy

Samples from jejunum were examined by an electron microscope operating at 60 KV (EM10C/CR, Zeiss, Oberkochen, Germany). Two different observers (at magnification  $\times 4,000$  and  $10,000$ ) evaluated randomly ten fields from each animal and length of microvilli was recorded blindly on photomicrographs. The arithmetic mean of the two scores was taken as the final measurement.

### Preparation of BBMVs

BBMVs were isolated using the magnesium precipitation method as previously described [15]. The procedure was carried out at  $0-4^\circ\text{C}$ . The averted jejunum was placed in 2 mmol/l Tris-HCl (pH 7.4) containing 100 mmol/l mannitol, stirred for 3 min (Vibro-mixer, E-1, Sorvall), and the scraped jejunal mucosa was removed. The mucosal suspension was mixed with 10 mmol/l  $\text{MgCl}_2$  (final concentration), and centrifuged at  $10,000 \times g$  (15 min). The supernatants were centrifuged again at  $26,000 \times g$  (30 min). Pellets were resuspended in 10 mmol/l  $\text{MgCl}_2$  and centrifuged at  $26,000 \times g$  (30 min). The final pellets were resuspended in the desired volume of 300 mmol/l mannitol, 0.1 mmol/l  $\text{MgSO}_4$ , 10 mmol/l Tris-HEPES buffer (pH 7.4) (load solution), so that a final protein concentration of 8-10 mg/ml was obtained. Isolated membranes were circled by using a N27 gauge needle. Sucrase (EC 3.2.1.48, enterocyte apical membrane marker) and sodium-potassium-ATPase (EC 3.6.1.3, enterocyte basolateral membrane marker) activities were determined in BBMV suspension [2]. Compared with the entire initial mucosal homogenate the BBMV activities of sucrase and sodium-potassium-ATPase were eleven and twenty fold greater and smaller, respectively. The total protein content of BBMVs was determined using Bradford method [19]. Vesicles were stored in liquid  $\text{N}_2$ .

### Assessment of D-galactose and amino acid uptake by BBMV's

Determination of nutrient uptake by BBMV's was carried out as previously described [15,16]. Assessment of amino acid uptake was performed at 25°C following the rapid filtration technique described by Hopfer et al. [20] with few modifications. BBMV suspension (5 µl) was added to the incubation medium (45 µl) containing 1 mmol/l of unlabeled amino acid, 25 µCi/ml of radiolabeled substrate (<sup>14</sup>C-U-L-leucine, <sup>14</sup>C-U-L-proline, <sup>14</sup>C-L-U-glutamic acid or <sup>35</sup>S-L-cystine, Amersham, U.K.), 100 mmol/l NaSCN or KSCN, 100 mmol/l mannitol, 0.1 mmol/l MgSO<sub>4</sub> and 10 mmol/l Hepes (pH 7.4). The time courses of amino acid uptake were measured under the following two different experimental conditions: a) under a sodium-gradient condition (NaSCN); and b) in the absence of sodium-gradient (KSCN). At time intervals (30 s, 60 s, 90 s, etc), adding 5 ml of ice-cold stop solution containing 150 mmol/l KSCN and 10 mmol/l Tris-Hepes (pH 7.4) ended the incubation. The suspension was immediately poured onto a pre-wetted Millipore filter which was washed three times with 3 ml of ice-cold stop solution, dissolved in 5 ml of scintillator Hisafe 3 (LKB Products, Bromma, Sweden) and assessed in a Counter Wallac 1409 (Pharmacia, Turku, Finland). Non-specific binding to the filter was previously measured and subtracted from the total uptake. Results were expressed as pmol of amino acid uptake per mg of protein.

Kinetics of D-Galactose and amino acids uptake were evaluated as previously reported [15,16] in the different aforementioned experimental conditions. Assays of uptake were carried out in the presence of several concentrations of substrate, from 0.025 until 7 mmol/l and at a fixed transport time of 3 seconds. Maximal velocity ( $V_{max}$ ) was expressed as pmol of substrate/mg protein in 3 seconds and the transporter affinity constant ( $K_t$ ) was expressed as mmol/l.

### Statistical study

Data were expressed as mean ± SEM. To analyze the homogeneity among groups, Kruskal-Wallis test was used, followed by multiple post-hoc comparisons using Mann-Whitney U tests with Bonferroni adjustment. Any *p* value <0.05 was considered to be statistically significant. Calculations were performed with SPSS program version 6.0 (SPSS Inc., Chicago, IL). The Sigma Plot Program (version 3.02 for PC) was used to process data of the kinetics of galactose and amino acids uptake by BBMV's.

### Results

Histological examinations (day 15 of the experimental period) confirmed the presence of cirrhosis in all animals that had received CCl<sub>4</sub> (CI and CI+IGF groups). All cirrhotic animals showed ascites (untreated cirrhotic ani-

mals, CI: 15.3 ± 2.4 ml, *p* < 0.001 vs control group; IGF-treated cirrhotic group, CI+IGF: 8.1 ± 1.3, *p* < 0.05 vs CI group) (Table 1).

**Table 1: Body and liver weights (g) and estimated ascites (ml)**

	CO	CI	CI+IGF
Body weight (b.w.) (g)	507.3 ± 19.3	445.7 ± 26.5	435 ± 33.2
Liver weight (g)	14.55 ± 0.80	13.59 ± 1.32	14.58 ± 1.81
Liver weight / 100 g b.w	2.87 ± 0.12	3.05 ± 0.24	3.12 ± 0.21
Ascites (ml)	-	15.3 ± 2.4 ***	8.1 ± 1.3 ** &

Values are mean ± SEM, n = 10; \*\**p* < 0.01, \*\*\**p* < 0.001 CO vs another groups; &*p* < 0.05 CI vs CI+IGF

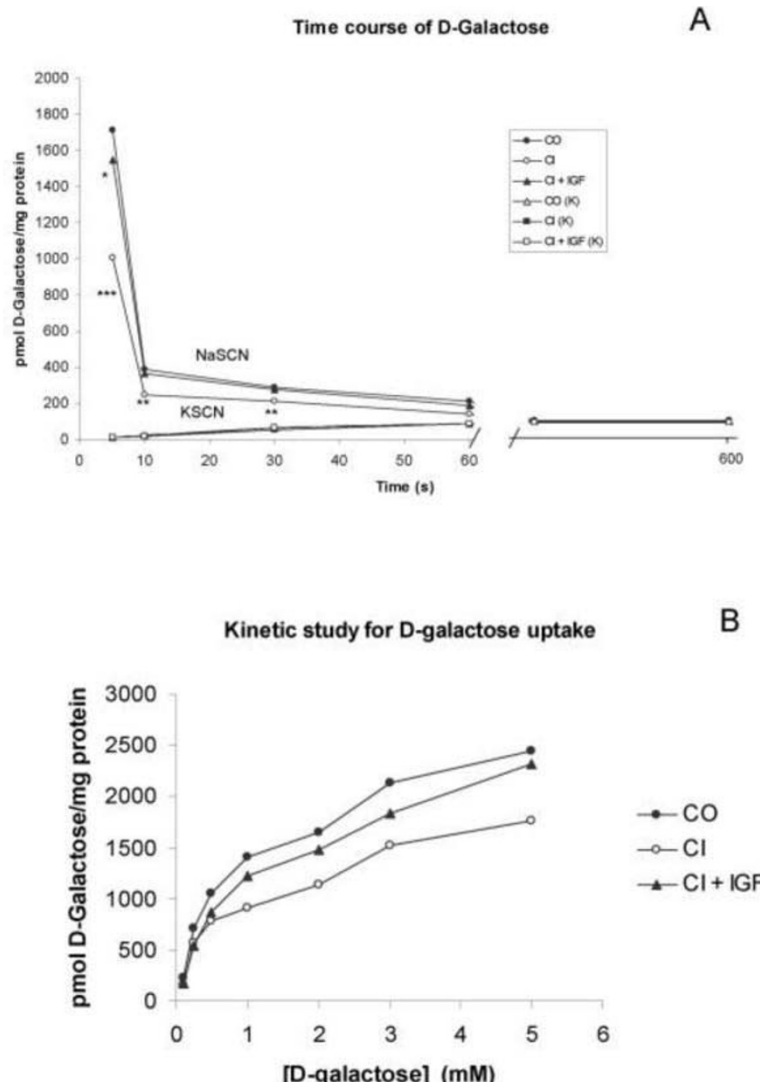
### Uptake of galactose and amino acids by jejunal BBMV's

Figures 1A and 2 show uptakes of D-Galactose, L-leucine, L-proline, L-glutamic acid and L-cysteine by BBMV's. Galactose and amino acids uptakes were assessed in the presence or absence of sodium gradient. In absence of sodium gradient, there were no differences between the three experimental groups in all cases. In the presence of sodium gradient, untreated cirrhotic animals had a significant lower uptake as compared to controls, whereas BBMV from IGF-I-treated cirrhotic group presented normal values not significantly different compared to controls and significantly higher than those of BBMV from untreated cirrhotic rats.

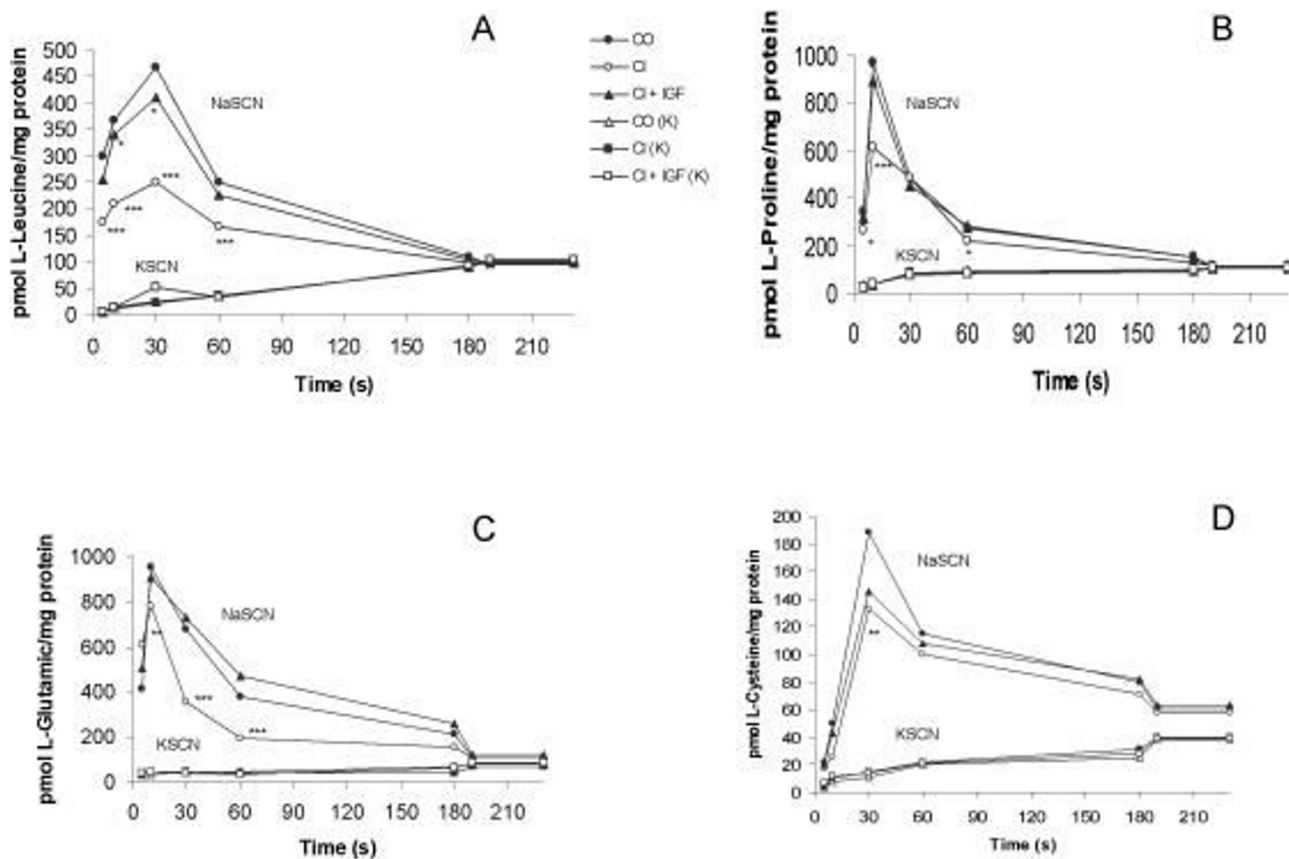
The kinetic studies of D-galactose and amino acid uptake by BBMV's were assessed at 3 seconds in the presence of different concentrations of substrates, from 0.01 to 5 mmol/l in a pool (n = 10 animals) of BBMV's from each group. It was found that  $V_{max}$  was significantly diminished (*p* < 0.01) in untreated cirrhotic animals compared to CO group for sugar and for three of the four amino acids tested (Table 2). However, a significant recovery of this parameter was assessed in CI+IGF group reaching normal values in all cases.

On the other hand, untreated cirrhotic animals (CI) showed an increased  $K_t$  (*p* < 0.01) compared to controls, expressing a lower affinity of transporters for their substrates. This parameter improved in cirrhotic rats treated with IGF-I (Table 2).

Electron microscopy studies are summarised in Figure 3 and Table 3. Ultrastructural alterations in microvilli varied from elongation to atrophy. Animals with compensated cirrhosis had elongated and straight microvilli (Fig. 3B) as has been previously reported [13,15]. Elongated microvilli were also found in a 40% of ascitic cirrhotic rats (Fig. 3C). However in 30% of animals with ascitic cirrhosis, microvilli were shorter (Fig. 3E and 3F), irregular in shape,



**Figure 1**  
**Uptake of D-Galactose into brush border membrane vesicles (BBMVs) (A)** Time course of D-galactose. \**p* < 0.05, \*\**p* < 0.01, \*\*\**p* < 0.001 CO vs other groups. **(B)** Kinetic study of the Na<sup>+</sup>-dependent for D-galactose uptake into BBMVs. Each point represents the mean of initial rate of D-galactose transport (SE was <10%) obtained from three different experiments using a pool of BBMVs from 10 animals from each group.

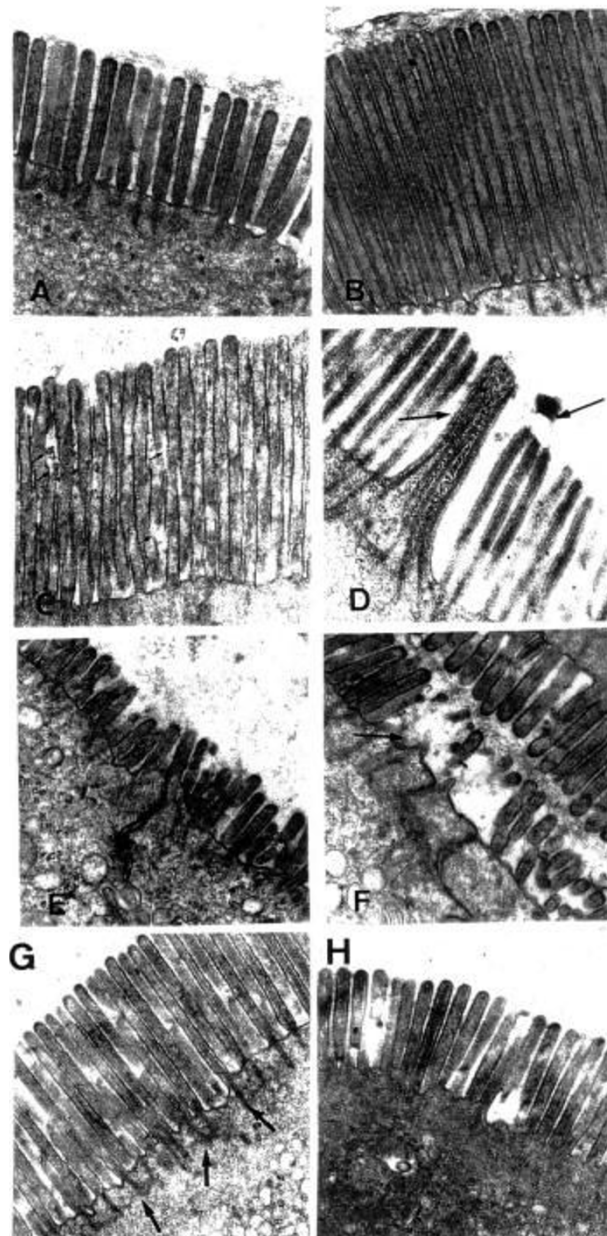


**Figure 2**  
**Kinetic studies of amino acid uptakes into brush border membrane vesicles (BBMV)** (A) Time course of L-leucine (1.0 mM) uptake by brush border membrane vesicles (BBMV); (B) Time course of L-proline (1.0 mM) uptake; (C) Time course of L-glutamic acid (1.0 mM) uptake and (D) Time course of L-cysteine (1.0 mM) uptake with (in the presence of NaSCN) or without (in the presence of KSCN) sodium-gradient. \**p* < 0.05, \*\**p* < 0.01, \*\*\**p* < 0.001 vs CO. No differences between groups were found in Na<sup>+</sup>-independent transport for the four amino acids studied.

**Table 2: Kinetic constants (Maximal velocity – V<sub>max</sub> and the affinity transporter constant – K<sub>t</sub>) for galactose and amino acid uptake by BBMV in the three experimental groups:**

Nutrient	Kinetic constants	Control group (CO, n = 10)	Untreated cirrhotic rats (CI, n = 10)	Cirrhotic rats treated with IGF-I (CI+IGF, n = 10)
<b>D-galactose</b>	V <sub>max</sub>	3470 ± 30	2460 ± 24***	3008 ± 45*
	K <sub>t</sub>	0.71 ± 0.01	1.03 ± 0.02**	0.78 ± 0.02
<b>L-leucine</b>	V <sub>max</sub>	305 ± 19	210 ± 15**	283 ± 18
	K <sub>t</sub>	1.6 ± 0.1	2.0 ± 0.2**	1.1 ± 0.1
<b>L-proline</b>	V <sub>max</sub>	165 ± 32	92 ± 7	159 ± 28
	K <sub>t</sub>	1.9 ± 0.2	3.3 ± 0.2***	2.1 ± 0.1
<b>L-glutamic acid</b>	V <sub>max</sub>	828 ± 23	545 ± 13***	789 ± 18
	K <sub>t</sub>	0.6 ± 0.0	1.1 ± 0.0**	0.8 ± 0.0
<b>L-cysteine</b>	V <sub>max</sub>	195 ± 26	105 ± 11***	182 ± 19
	K <sub>t</sub>	1.9 ± 0.1	2.3 ± 0.2**	1.9 ± 0.1

Values are mean ± SEM, n = pool of BBMV from 10 animals from each group. V<sub>max</sub> expressed as pmol of substrate/ mg protein × 3 seconds and K<sub>t</sub> as mmol/l. \**p* < 0.05, \*\**p* < 0.01, \*\*\**p* < 0.001 CO vs other groups.



**Figure 3**

**Alterations of jejunal microvilli** Electron microscopy of jejunal mucosa ( $\times 10,000$ , magnification): **(A)** Microvilli from healthy controls; **(B)**. Elongated microvilli described in animals with compensated cirrhosis [13,14]; **(C)**. Elongated microvilli with degenerative lesions of membranes from ascitic cirrhotic rats (CI group); **(D)**. Elongation and fusion of microvilli was found in 40% of untreated rats with ascitic cirrhosis (CI); **(E)** and **(F)** atrophy of microvilli was found in the remaining 60% of this group (CI). However, atrophy microvilli were not found in CI+IGF group (see **(G)** and **(H)**). Effect of IGF-I on microvilli in ascitic cirrhotic rats (CI+IGF group) ( $\times 10,000$ , magnification): **(G)**, area with mild elongated microvilli, and **(H)**, quite normal epithelium instead of atrophy. Arrows show the increased density in actin microfilaments at the side of connection with the intermediate filaments network in microvilli from treated cirrhotic rats. Thus, the described alterations in untreated rats with ascitic cirrhosis (C, D, E and F) were partially improved by IGF-I treatment (G and H).

**Table 3: Morphometric study of microvilli in animals with advanced liver cirrhosis.**

	Control group (CO)	Untreated cirrhotic group (CI)		Cirrhotic rats treated with IGF-I (CI+IGF)
		elongated microvilli	microvilli atrophy	
Length of microvilli ( $\mu\text{m}$ )	1.66 $\pm$ 0.08	2.91 $\pm$ 0.31***	0.81 $\pm$ 0.19***	1.97 $\pm$ 0.24&

Values are mean  $\pm$  SEM, n = 8, \*\*\*p < 0.001; CO vs other groups, &p < 0.05 CI vs CI+IGF

partly clustered and more loosely packed than normal. In the remaining rats enterocyte microvilli were longer and often fused (Fig. 3D), had electron lucent cores and their membrane was disrupted. Cirrhotic animals treated with IGF-I had a tendency to normalize the morphology of microvilli recovering normal size and electron density (Fig. 3G). No microvilli with atrophy were found in this group (CI+IGF) (Fig. 3H).

These results indicate the existence of an alteration in sugar and amino acid transport by the jejunum associated with atrophy of mucosa in rats with advanced cirrhosis.

### Discussion

The main findings in this study were: 1) the evolution of jejunal structure from a marked elongation in early stages [13,15] of liver cirrhosis to atrophy and degeneration of microvilli in advanced cirrhosis; 2) sugar and amino acid absorption were similar to that observed in the very early phase; and 3) the improvement of both morphological and functional alterations after a two week-course of treatment with low doses of IGF-I.

Over many years, morphological studies in the small intestinal mucosa in patients with cirrhosis have been reported [21]. Marked changes such as edema, inflammation and fibrosis of the villi have been described [21]. In contrast, other studies found minimal changes or normal mucosa. Thus, histological reports of the small intestine in cirrhosis show wide variation [21]. The present study shows the histological progression of microvilli overtime, suggesting that the presence of mucosa atrophy does occur in advanced cirrhosis with ascites. However, ultrastructural changes are present since early stages of liver cirrhosis. Alterations of this nature may well contribute to malabsorption by altering carrier-substrate interaction, as it has been demonstrated [13,15]. When cirrhosis is more advanced and rats show ascites, microvilli tend to become atrophied. In this stage, IGF-treatment was also able to restore normal intestinal morphology and function.

In early stages of cirrhosis rats showed an elongation of microvilli [22]. We proposed that this could explain the

reduced intestinal transport of nutrients because of an altered position of the carriers in intestinal mucosa [13,15,16]. In more advanced cirrhosis the atrophy of the mucosa may in addition lead to a reduction in carrier number, explaining the reductions of maximal velocity ( $V_{\text{max}}$ ) and affinity of the transporters for their substrates (expressed as increased Kt) (Table 2).

On the other hand, a question arises as to whether direct toxicity of  $\text{CCl}_4$  to intestinal mucosa could contribute to atrophy since alcohol is known to damage intestinal mucosa as well as liver and pancreas [22]. In the present work  $\text{CCl}_4$  was given by inhalation, and thus its deleterious effects were exerted on liver [18,22] and lung. In fact, this toxic possibility has been reasonably ruled out by the presence of similar levels of malondialdehyde, a marker of lipid peroxidation [23], in intestinal mucosa homogenates from both controls and  $\text{CCl}_4$ -treated rats (data not shown).

According to previous studies [15,16,18], we postulate that the reported morphological and functional alterations in the jejunum could be due to IGF-I deficiency occurring in liver cirrhosis. In fact, we have previously shown that in this experimental model of advanced liver cirrhosis, serum levels of IGF-I were significantly reduced (35% of those found in healthy controls) [14].

The first change on enterocytes, already described [13,15], seems to be the reduction of density in actin microfilaments at the site of connection with the intermediate filaments network. The alterations of the electron density of microvilli are reported to be due to a rearrangement of cytoskeleton filaments [24]. Interestingly, IGF-I induces marked changes in cell shape and cytoskeletal organization in different cell lines [13,15,25,26]. The elongation of microvilli could occur as a secondary adaptive hyperplasia to increase the absorptive surface, thus enhancing the maximum absorptive capacities of the jejunum and ileum, as it has been described after treatment with prednisolone [27]. It is well known that in coeliac syndromes a strict gluten-free diet produces a normalization of the mucosa in few weeks [28,29]. In liver cirrhosis, portal

hypertension could be a pathogenic factor for intestinal atrophy.

In our experiment the effect of IGF-I on microvilli of cirrhotic rats may be explained in two ways that are not mutually exclusive themselves. On one hand, the amelioration of liver function induced by IGF-I [18] may have a secondary beneficial effect on intestinal morphology and function. On the other hand, a direct effect of IGF-I on microvilli is plausible since there is much evidence about the trophic effect of IGF-I on jejunum [30,31] after small bowel resection and in parenterally fed rats [32,33].

## Conclusions

In conclusion, the relative early onset of intestinal damage, similar to mild lesion of coeliac disease could be due to different factors but the subsequent partial recovery is attributable to IGF-I administration. These results reinforce our previous observations of a beneficial effect of IGF-I on intestinal structure and function in rats with liver cirrhosis, acting not only in early but also in advanced stages of chronic hepatic disease.

## Authors' contributions

ICC: Experimental design and treatment (induction of liver cirrhosis and IGF-I administration), hypothesis, histopathological study and measurements (EM). MP: In vitro assays with BBMV and statistical analysis. EU: In vitro assays with BBMV and statistical analysis. JP: Histopathology diagnosis. JP: Experimental treatment and documentation. BV: Experimental treatment and documentation. ADC: Experimental treatment and documentation. MG: Analytical studies and experimental treatment. MDS: Analytical studies and measurements (EM). IVN: Biochemical analysis. AC: Hypothesis and experimental design. SGB: Design and Revision.

## Abbreviations

IGF-I, insulin-like growth factor-I; CO, control group; CI, untreated cirrhotic group; CI+IGF, cirrhotic group treated with IGF-I; BBMV, brush border membrane vesicles;  $V_{max}$ , maximal velocity;  $K_t$ , transporter affinity constant; EM: electron microscopy.

## Acknowledgments

The authors wish to express their gratitude to Dr. Bruce Scharschmidt, Chiron Company (USA) for generously granting the IGF-I used in this study. We are also deeply indebted to Mrs Cristina Chocarro and Blanca Irgoyen for their expert technical assistance and the Grants from Mr. J. Celaya. Supported by the Spanish Program I+D, SAF 2001/1672.

## References

1. Crawford DHG, Shepherd RW, Halliday JW: **Body composition in non-alcoholic cirrhosis: the effect of aetiology and severity on nutritional compartments.** *Gastroenterology* 1994, **106**:1611-1617.

2. Kondrup J, Nielsen K, Hamberg O: **Nutritional therapy in patients with liver cirrhosis.** *Eur J Clin Nutr* 1992, **46**:239-246.
3. Morgan MY: **Oxford Textbook of Clinical Hepatology.** Oxford: Medical Publications, New York; 1999:1923-1981.
4. Caufriez A, Reding P, Urbain DJ: **Insulin-like growth factor I: a good indicator of functional hepatocellular capacity in alcoholic liver cirrhosis.** *Endocrinol Invest* 1991, **14**:317-321.
5. Donaghy A, Ross R, Gimson A: **Growth hormone, insulin-like growth factor-I, and insulin-like growth factor binding proteins 1 and 3 in chronic liver disease.** *Hepatology* 1995, **21**:680-688.
6. Hattori N, Kurahachi H, Ikekubo K: **Serum growth hormone-binding protein, insulin-like growth factor-I and growth hormone in patients with liver cirrhosis.** *Metab Clin Exp* 1992, **41**:377-381.
7. Schimpff RM, Lebrec D, Donadieu M: **Somatomedin production in normal adults in cirrhotics patients.** *Acta Endocrinol* 1977, **86**:355-362.
8. Laburthe M, Rouyer-Fessard C, Gammeltoft S: **Receptors for insulin-like growth factors I and II in rat gastrointestinal epithelium.** *Am J Physiol* 1988, **254**:G457-G462.
9. MacDonald RS, Park JHY, Thornton WH: **Insulin, IGF-I and IGF-II receptors in rat small intestine following massive small bowel resection. Analysis by binding, flow cytometry, and immunohistochemistry.** *Dig Dis Sci* 1993, **38**:1658-1669.
10. Termanini B, Nardi RV, Finan TM: **Insulin-like growth factor I receptors in rabbit gastrointestinal tract: Characterization and autoradiographic localization.** *Gastroenterology* 1990, **99**:51-66.
11. Chaurasia OP, Marcuard SP, Seidel ER: **Insulin-like growth factor I in human gastrointestinal exocrine secretions.** *Regulatory Peptides* 1994, **50**:113-119.
12. Picardi A, Costa de Oliveira A, Muguerza B: **Low doses of insulin-like growth factor-I improve nitrogen retention and food efficiency in rats with early cirrhosis.** *J Hepatol* 1996, **24**:267-279.
13. Castilla-Cortazar I, Picardi A, Ainzua J, Tosar A: **Effects of insulin-like growth factor-I on in vivo intestinal absorption of D-Galactose in cirrhotic rats.** *Am J Physiol* 1999, **276**:G37-G42.
14. Castilla-Cortazar I, Garcia M, Quiroga J, Diez N, Diez-Caballero F, Calvo A, Diaz M, Prieto J: **Insulin-like growth factor-I reverts testicular atrophy in rats with advanced cirrhosis.** *Hepatology* 2000, **31**:592-600.
15. Castilla-Cortazar I, Prieto J, Urdaneta E: **Impaired intestinal sugar transport in cirrhosis rats: correction by low doses of insulin-like growth factor I.** *Gastroenterology* 1997, **113**:1180-1187.
16. Pascual M, Castilla-Cortazar I, Urdaneta E, Quiroga J: **Altered intestinal transport of amino acids in cirrhotic rats: the effect of insulin-like growth factor-I.** *Am J Physiol* 2000, **279**:G319-G324.
17. National Academy of Sciences: **The Guiding principles for research involving animals.** Washington, DC: National Institutes of Health; 1991.
18. Castilla-Cortazar I, Garcia M, Muguerza B, Quiroga J, Perez R, Santidrian S, Prieto J: **Hepatoprotective effects of insulin-like growth factor-I in rats with carbon tetrachloride-induced cirrhosis.** *Gastroenterology* 1997, **113**:1682-1691.
19. Bradford MM: **A rapid and sensitive method for the quantitation of microgram quantities of protein utilizing the principle of protein-dye binding.** *Anal Biochem* 1976, **72**:248-254.
20. Hopfer U, Sigrist-Nelson K, Perrotto J: **Glucose transport in isolated brushborder membrane from rat small intestine.** *J Biol Chem* 1973, **248**:25-32.
21. Losowsky MS, Walker BE: **Liver disease and malabsorption.** *Gastroenterology* 1996, **56**:589-600.
22. Ariosto F, Riggio O, Cantafora A, Colucci S, Gaudio E, Machelli C, Merli M, Seri S, Capocaccio L: **Carbon tetrachloride-induced experimental cirrhosis in the rat: a reappraisal of the model.** *Eur Surg Res* 1989, **21**:280-286.
23. Gutteridge JMC: **Lipid peroxidation and antioxidants as biomarkers of tissue damage.** *Clin Chem* 1995, **41**:1819-1828.
24. Arai A, Nakazawa T: **Arrangement of actin filaments and cytoplasmic granules in the sea urchin egg after TPA treatment.** *Cell Motil Cytoskeleton* 1998, **39**:21-30.
25. Berfield AK, Spicer D, Abrass CK: **Insulin-like growth factor (IGF-I) induces unique effects in the cytoskeleton of cultured rat glomerular mesangial cells.** *J Histochem Cytochem* 1997, **45**:583-593.



26. Harder BA, Schaub MC, Eppenberger HM, Eppenberger-Eberhardt M: **Influence of fibroblast growth factor (bFGF) and insulin-like growth factor (IGF-I) on cytoskeletal on contractile structures and on atrial natriuretic factor (ANF) expression in adult rat ventricular cardiomyocytes in culture.** *J Mol Cell Cardiol* 1996, **28**:19-31.
27. Batt RM, Scott J: **Response of the small intestinal mucosa to oral glucocorticoids.** *Scand J Gastroenterol* 1982, **Suppl 74**:75-88.
28. Ciclitira PJ, Ellis HJ: **In vivo gluten ingestion in coeliac disease.** *Dig Dis* 1998, **16**:337-40.
29. Manners HK, Hart CA, Getty B: **Characterization of intestinal features in gluten-sensitive Irish Setters during controlled oral gluten challenge exposure after weaning.** *Am J Vet Res* 1998, **59**:1435-40.
30. Steeb CB, Trahair JF, Read LC: **Administration of insulin-like growth factor-I (IGF-I) peptides for three days stimulates proliferation of the small intestinal epithelium in rats.** *Gut* 1995, **37**:630-638.
31. Steeb CB, Trahair JF, Tomas FM: **Prolonged administration of IGF peptides enhances growth of gastrointestinal tissues in normal rats.** *Am J Physiol* 1994, **266**:G1090-G1098.
32. Peterson CA, Ney DM, Hinton PS: **Beneficial effects of insulin-like growth factor I on epithelial structure and function in parenterally fed rat jejunum.** *Gastroenterology* 1996, **111**:1501-1508.
33. Lo HC, Ney DM: **GH and IGF-I differentially increase protein synthesis in skeletal muscle and jejunum of parenterally fed rats.** *Am J Physiol* 1996, **271**:E872-E878.

### Pre-publication history

The pre-publication history for this paper can be accessed here:

<http://www.biomedcentral.com/1471-230X/4/12/prepub>

Publish with **BioMed Central** and every scientist can read your work free of charge

*"BioMed Central will be the most significant development for disseminating the results of biomedical research in our lifetime."*

Sir Paul Nurse, Cancer Research UK

Your research papers will be:

- available free of charge to the entire biomedical community
- peer reviewed and published immediately upon acceptance
- cited in PubMed and archived on PubMed Central
- yours — you keep the copyright

Submit your manuscript here:

[http://www.biomedcentral.com/info/publishing\\_adv.asp](http://www.biomedcentral.com/info/publishing_adv.asp)

